

productinfo

INTERNET-SERVER



Access File Cabinets Worldwide via Intranet and Internet

DocuWare stores documents, whether they are letters, e-mails or accounting records, all in one central document pool. INTERNET-SERVER gives authorized users the chance to access this knowledge via the Internet. Using any standard Web browser, employees, customers and prospects can access information – from around the world or within your company.

Applications

With INTERNET-SERVER, every organization or company can grant its employees and customers access to an enormous pool of knowledge. Many different industries and divisions have used this product in diverse ways: For example, a trucking company can improve its service by giving customers direct access to their own "Customer Account" via the companys web site. To track an order and check who received the shipment, the customer simply has to go to the homepage, enter his customer number and a timespan for the delivery. Immediately, a list with all the signed delivery forms is displayed. With a mouseclick, the desired document can be displayed in the browser. The customer can then see, based on the signature, who received the shipment. In other words, the documents which were once only used for internal tracking purposes, are now directly available to the customer, thus enhancing service.

Companies are also using INTERNET-SERVER as a tool for modern knowledge management to further empower employees. All employees, whether they work in-house, from remote locations or from a home office, can access the latest information from any kind of document – all without additional web programming, just by simply storing documents in a DocuWare file cabinet. Whether its product information such as price lists or data sheets, technical documentation, contracts, internal protocols, instructions, or news about the competition – INTERNET-SERVER is the ideal way to securely arm colleagues with all this information.

Highlights

- Password-protected access to document pool from any location with a simple web browser
- Provide company wide access to documents via the Intranet without installing DocuWare at each workstation
- Edit index criteria, as well as search, display, download and file documents on the Web
- Customizable templates allow to blend DocuWare into the design of a companys web site

System Requirements

- DocuWare 5 and INTERNET-SERVER on Windows 2000 and higher
- Web Server (such as Apache, MS IIS, Netscape Enterprise Server) on the same or separate – as well as SUN or Linux – System
- Perl Interpreter Version 5.004 or higher with CGI-Library "CGI.PM" Version 2.5 or higher
- HTML-Browser such as Internet Explorer 4+, Netscape Navigator4+, Firefox, Mozilla



Some Recent Examples

- **Sales:** The entire sales team can access file cabinets remotely with a Notebook and ISDN, modem or mobile telephone.
- **Order Processing:** A company can access a vendor's web site to check the status of an order.
- **Customer Service:** Technical documents can be accessed through a service bureau or directly by a client.
- **R&D:** Provide technical documentation through a network to PCs and CAD Workstations alike.
- **Multi-Location:** All subsidiaries can have access to item codes, brochures, product information and all business records.
- **Retail:** Customer can access product information, brochures and price lists.
- **Local government:** Voter registrations are stored in one central pool which can be checked by all other registration offices.
- **Insurance Agencies:** Policies can be viewed by both the customer and authorized employees via the Web.
- **Construction Firms:** Quick access to blueprints, bids, worker contracts, agreements and legal documents.
- **Hospitals:** Central storage for all patient documents.
- **Car Dealerships:** All offices can access spare part order information, including delivery times and dates.

Adapting PERL-Scripts

Through the extension of the PERL-Script, experienced PERL-programmers can create elaborate adaptations. For example, they can create an automatic Login with a permanent or other type of user account (such as external login), or they can make certain database fields visible (changeable) or invisible (permanent).

Adapting the Style-Sheet

The information contained in the Style-Sheet determines the look of the finished HTML pages. These make it possible to, for example, customize the background color of the Search Menu, and even alter font size, color, style and spacing.

Adapting HTML Templates

The included HTML templates allow to customize the look of the program to fit in with the overall corporate design of the Web site. Only the Tags, which are replaced during the runtime by the HTML code of the server module, may not be changed. This makes it possible to freely define the position of the Search and Storage Menus and expand on a variety of other HTML elements on the page.

Functionality

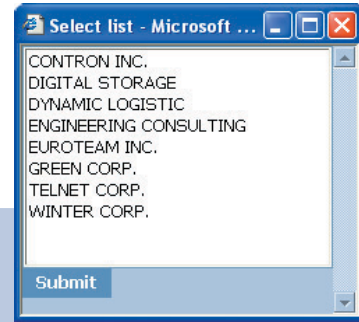
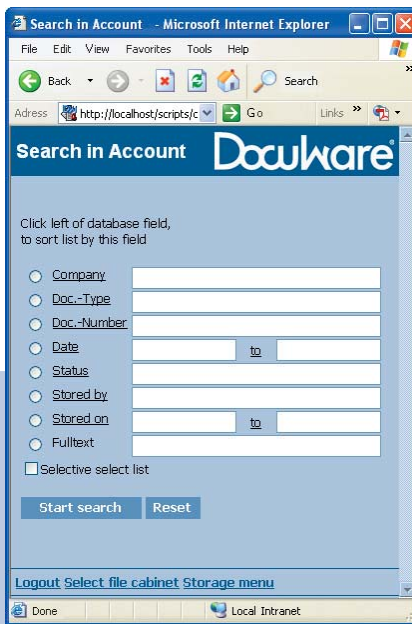
With the standard configuration, the user starts by clicking a link on a web page to reach the *Login* Menu of INTERNET-SERVER which requests the user's name and password. After authorizing the login information, a File Cabinet Selection List appears containing all the file cabinets which have been released for access by Internet/Intranet.

To locate specific documents, a special Search Menu opens. This lets the user search through the index fields of a selected file cabinet. The menu offers some standard Windows client functions: Keywords can be typed in, including asterix *. Or the user can open a Select List for each field, which includes previously used index criteria, and pick a keyword. The Select List can also be narrowed down by typing in the first letter of a keyword or the user can also just view the terms which were entered into the database in conjunction with the other fields already filled in.

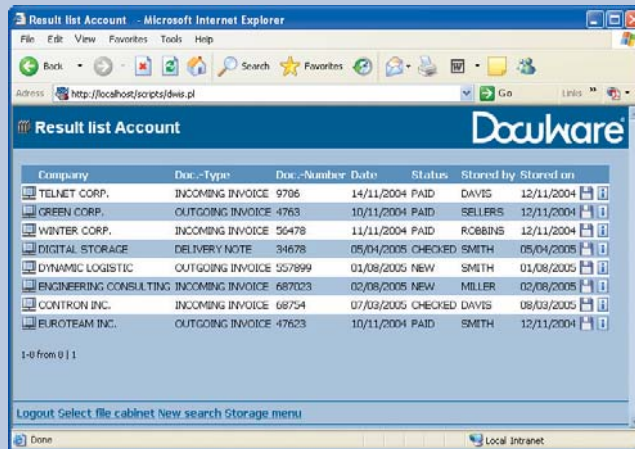
When more than one document is found during the search, a Result List opens that displays all the documents that fit the criteria, listing them as hyperlinks. The user can now display documents in a browser, download them to store them locally or, in the case of scanned or by TIFFMAKER created documents, display the document at a higher resolution in the DocuWare READER.

If authorized, the user may also change the index criteria for the document in the Infobox. The same entry tools are available in the Infobox as provided during the search process. Under Display, the user can zoom in, rotate, or page through documents, or jump directly to the next entry in the Result List. It's also possible to download the document from the browser display, as well as view it in DocuWare READER and update the index criteria in the Infobox.

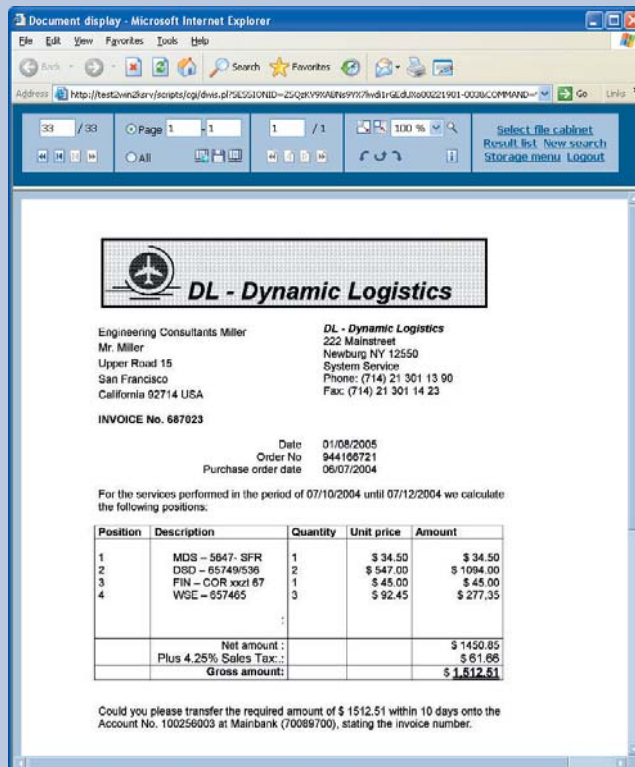
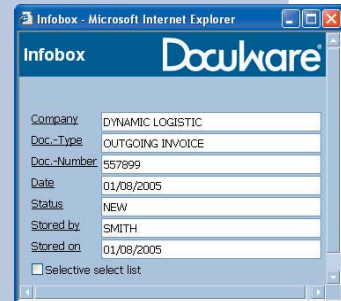
Documents can also be stored in file cabinets with INTERNET-SERVER. From the Storage Icon, the user clicks in the File Cabinet Select List next to the appropriate file cabinet and a Storage Menu opens. Similar to the Search Menu, the user enters index criteria and then selects the file to be stored. The individual menus of INTERNET-SERVER can be adapted using HTML and Perl-Programming, to meet the needs of an organization. INTERNET-SERVER's server module contains HTML code for individual elements of the DocuWare dialogs (Login Menu, Search Menu, and Result List), i.e., headers, links, database fields and buttons. HTML templates that determine how these elements are arranged in certain menus are then extended through PERL-Script to create complete HTML pages.



A search using INTERNET-SERVER works as always with the help of Select Lists



INTERNET-SERVER also includes an Infobox as part of the Result List



Retrieved documents may be displayed with INTERNET-SERVER

