

# productinfo



## LINK

### Access Documents Directly Out of Accounting Programs, ERP and Other Applications

*LINK lets you easily integrate documents filed in DocuWare within existing applications, such as an accounting or retrieval program. With a few clicks of the mouse, you can access all documents that belong to the current needs of your application – for example, the shipping documents belonging to an accounting record being processed.*

#### Scope

DocuWare LINK is installed as an add-on module to DocuWare. The program is made up of two program parts, the LINK-Editor and the LINK-Window. A so-called "Link" contains the work order which directs where and how data should be extracted from a foreign application. The LINK-Editor helps you create these links easily and comfortably. With LINK-Window, which generates the invisible connection to DocuWare, each created link can be called up.

#### Functionality

DocuWare LINK sets up two different types of links between your application and DocuWare. With a "Search Link" you can start a retrieval process right out of our application to search for documents stored in

DocuWare file cabinets. With a "Store Link," you can take information displayed in your application menu and use it for indexing documents in DocuWare. With both link types, information is extracted from specified application menus (the criteria being set with the LINK-Editor) from pre-defined areas – typically entry and text fields – and the data is transferred to DocuWare. The extraction method used depends mostly on what kind of application you are working with. If these fields can be directly accessed by the system, the information can immediately be read as CI data (coded information). If it's not possible to do this with your application, the program uses OCR

#### Highlights

- Transfer index words into DocuWare storage menus
- Direct access to filed documents from other applications – with a click of a button
- Compatible with Windows and DOS applications as well as terminal emulations

#### System Requirements

- DOS programs and terminal emulations must be running in a Windows window (not in full display mode)

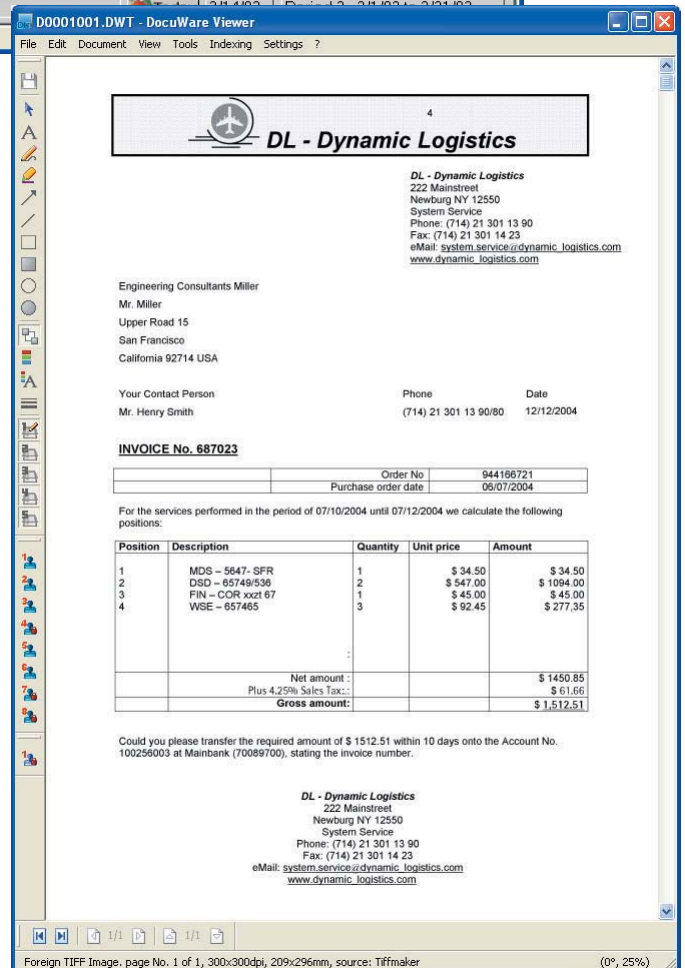
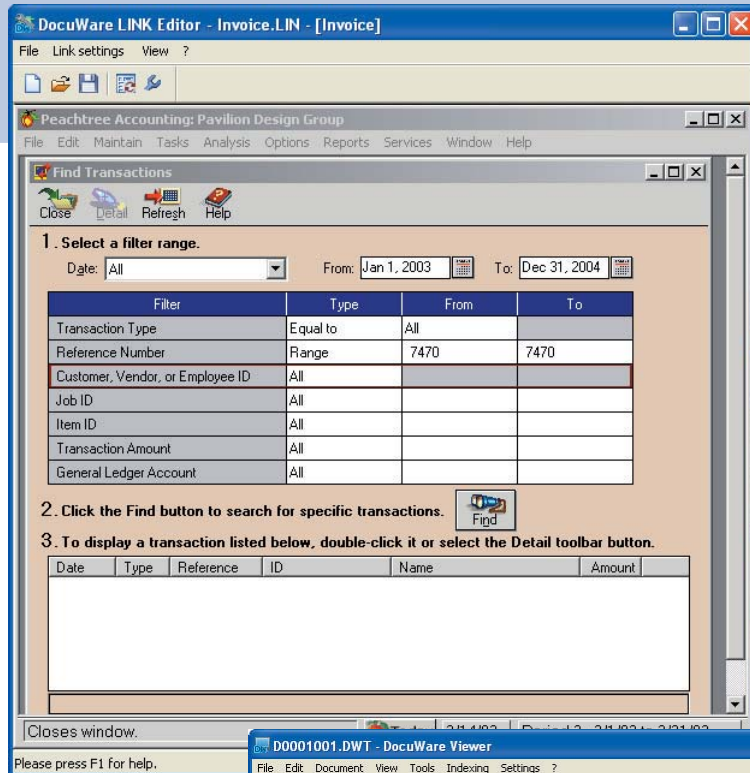
technology instead. With DOS applications or terminal emulations, the reading takes place via another technique.

When the information is extracted or read per OCR, depending on the type of Link used, it is transferred into the fields of either the search or storage menu. The LINK-Editor sets the target fields, as well as whether certain fields are filled with fixed values, such as "OUTGOING INVOICE" in the field called "Document Type."

With the Search Link you can also determine if the search menu should be shown during the process as a cross-check or whether a search should be initiated immediately in DocuWare. With Store Link, the storage menu is always displayed as a control. The document highlighted in the DocuWare basket is then stored.

### Configuration

The LINK-Editor is opened alongside your application. You load the application window by clicking the LINK-Editor. That's where you can then mark the LINK fields and connect them to DocuWare index fields. The defined links can be assigned a key combination and then saved.



*A click of a button lets you view documents stored with DocuWare right out of a foreign application.*

For more information please visit our website at [www.docuware.com](http://www.docuware.com)